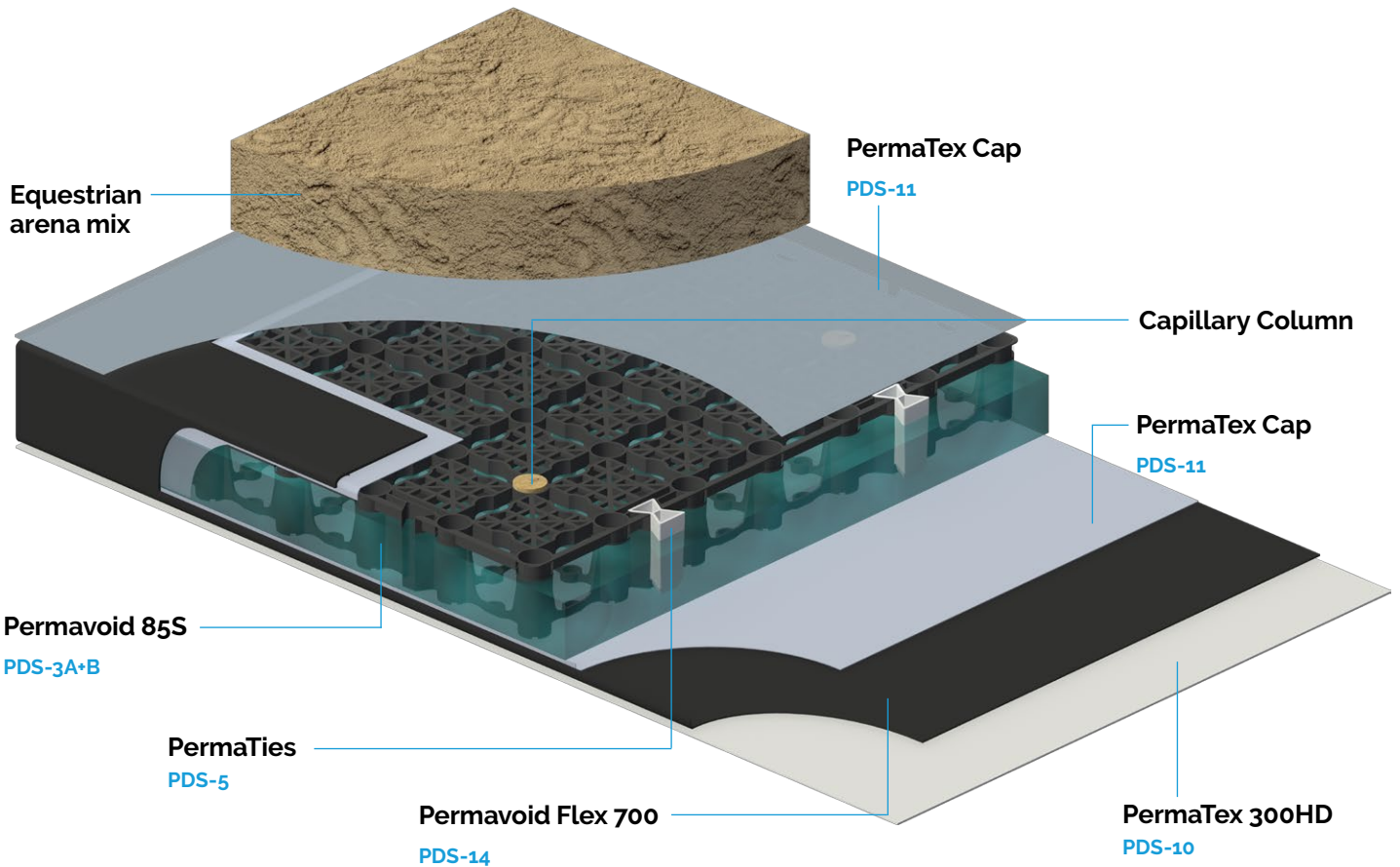


PERMAVOID SPORTS SYSTEMS: EQUESTRIAN ARENAS



Maximize arena availability while minimizing water consumption

A professional equestrian arena needs to meet the highest standards for the riders and horses to run their courses safely. Moisture content in the sand is essential in maintaining a consistent surface performance. With the Permavoid system beneath the (temporary) equestrian arena, the system of sub-surface capillary irrigation naturally maintains the desired soil moisture content, while during rainfall excess water is quickly drained. After rain the event can be resumed quickly and during drought extra water can be added through the foundation, without the use of surface spray irrigation systems.

The Permavoid system has been used at the highest level, from the equestrian arenas in Greenwich Park for the 2012 London Olympics to a temporary arena in New York's Central Park. It comes into its own for gallops, arenas and canter tracks for professional dressage, show jumping and racing yards, but is equally valuable for commercial arenas such as riding schools, livery yards and colleges. Indoors, and outdoors too.

Case studies



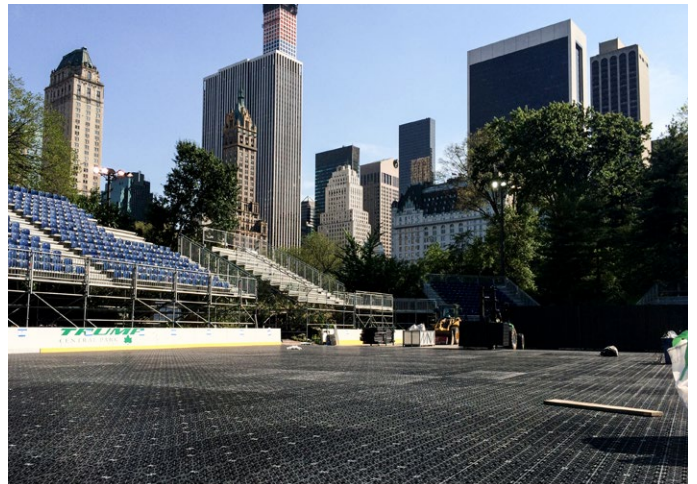
Dan Skelton Racing Gallop, Alcaster (UK)



Indoor Equestrian Arena, Cranmore Farm (UK)



Greenwich Park, London Olympics



Central Park, New York City (USA)

Note:

Visit www.permavoid.com to download our latest company brochures and product data sheets (PDS).

Permavoid Head Office

Kattenburgerstraat 5

1018 JA | Amsterdam | The Netherlands

www.permavoid.com | info@permavoid.co.uk

Permavoid Ltd. is part of the Polypipe Group.