

# PERMAVOID FLEX 700 PREFAB

A polythene reinforced cross-laminated, LDPE waterproof membrane. Its patented construction yields the best weight to strength ratio available and also provides exceptional tear and puncture resistance, while remaining foldable to create corners and edges. No material offers a better balance of properties or more proven performance and

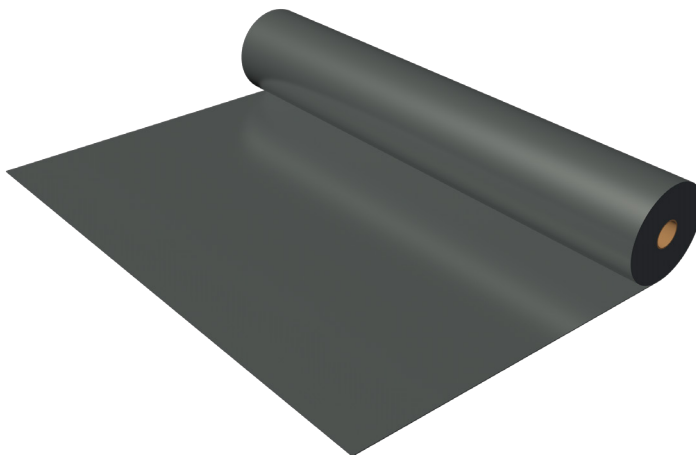
reliable durability for the creation of waterproof tanks for blue-greenroofs, on podiumdecks, in SUDS applications or underneath trees and green spaces in the urban environment. Waterproof liners can be manufactured to specification for your project, or easily and reliably heat welded on site by an experienced crew.

## Applications

- Blue-Green roofs
- Podium Decks
- Sports
- Equestrian
- Urban Trees
- Landscaped SUDS
- Hardscaped SUDS

## GENERAL

<b>Brand</b>	Permavoid
<b>Product Name</b>	Permavoidflex 700
<b>Item nr.</b>	300001
<b>Product type</b>	Waterproof liner
<b>Color</b>	Black
<b>Material</b>	PES fabric with LDPE coating



# PERMAVOID FLEX 700 PREFAB

## SIZE

Prefabricated project specific made-to-size waterproof liners can be manufactured up to a maximum of 1.500 m<sup>2</sup>, with a maximum width of 50 m and a maximum weight of 2.000 kg.

<b>Unit weight</b>	EN 965	600 g/m <sup>2</sup>
<b>Thickness</b>	EN 964-1	850 micron
<b>CBR Puncture resistance</b>		
<b>Dynamic cone drop</b>		
<b>Nominal tensile strength</b>	EN 13859	1.200 N/5cm
<b>Elongation at nominal tensile strength</b>	EN 13859	17%
<b>Recycled/Virgin</b>		Virgin
<b>UV stabilised</b>		Yes

## PACKAGING

<b>Packaging</b>	Prefabricated liners, folded and rolled package on pallet or steel bar.
<b>Packaged size</b>	t.b.d.
<b>Quantity</b>	1.500 m <sup>2</sup> max.
<b>Total package weight</b>	2.000 kg max.
<b>Storage instruction</b>	Handle with care
<b>HS Code</b>	56021019

### Notes

Permavoid Ltd. will not be held liable if our products are used in a manner inconsistent with our requirements, standards or the purposes indicated in the standards. Standards can be obtained at [www.permavoid.com](http://www.permavoid.com). This document is not contractual. With our constant concern for improvements, the information this document contains and the products presented may be modified without notice. The latest version of this document can be obtained at [www.permavoid.com](http://www.permavoid.com). Please get in touch with us if you require any further documentation or information.

### Instructions

Waterproof liner shall be placed on a layer of protective geotextile. Waterproof liner shall be covered with a layer of protective or capillary geotextile as soon as possible.

Data Sheet: PDS-15  
Last revised: January 2021

### Permavoid Head Office

Kattenburgerstraat 5

1018 JA | Amsterdam | The Netherlands

[www.permavoid.com](http://www.permavoid.com) | [info@permavoid.co.uk](mailto:info@permavoid.co.uk)

Permavoid Ltd. is part of the Polypipe Group.