

PERMAVOID FLEX 700 PREFAB

A polythene reinforced cross-laminated, LDPE waterproof membrane. Its patented construction yields the best weight to strength ratio available and also provides exceptional tear and puncture resistance, while remaining foldable to create corners and edges. No material offers a better balance of properties or more proven performance and

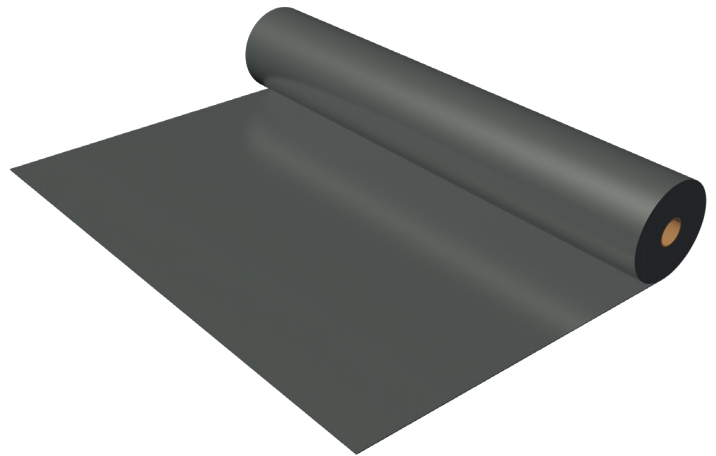
reliable durability for the creation of waterproof tanks for blue-greenroofs, on podiumdecks, in SUDS applications or underneath trees and green spaces in the urban environment. Waterproof liners can be manufactured to specification for your project, or easily and reliably heat welded on site by an experienced crew.

Applications

- Blue-Green roofs
- Podium Decks
- Sports
- Equestrian
- Urban Trees
- Landscaped SUDS
- Hardscaped SUDS

GENERAL

Brand	Permavoid
Product Name	Permavoidflex 700
Item nr.	300001
Product type	Waterproof liner
Color	Black
Material	PES fabric with LDPE coating



PERMAVOID FLEX 700 PREFAB

SIZE

Prefabricated project specific made-to-size waterproof liners can be manufactured up to a maximum of 1.500 m², with a maximum width of 50 m and a maximum weight of 2.000 kg.

Unit weight	EN 965	600 g/m ²
Thickness	EN 964-1	850 micron
CBR Puncture resistance		
Dynamic cone drop		
Nominal tensile strength	EN 13859	1.200 N/5cm
Elongation at nominal tensile strength	EN 13859	17%
Recycled/Virgin		Virgin
UV stabilised		Yes

PACKAGING

Packaging	Prefabricated liners, folded and rolled package on pallet or steel bar.
Packaged size	t.b.d.
Quantity	1.500 m ² max.
Total package weight	2.000 kg max.
Storage instruction	Handle with care
HS Code	56021019

Notes

Permavoid Ltd. will not be held liable if our products are used in a manner inconsistent with our requirements, standards or the purposes indicated in the standards. Standards can be obtained at www.permavoid.com. This document is not contractual. With our constant concern for improvements, the information this document contains and the products presented may be modified without notice. The latest version of this document can be obtained at www.permavoid.com. Please get in touch with us if you require any further documentation or information.

Instructions

Waterproof liner shall be placed on a layer of protective geotextile. Waterproof liner shall be covered with a layer of protective or capillary geotextile as soon as possible.

Data Sheet: PDS-15
Last revised: January 2021

Permavoid Head Office

Kattenburgerstraat 5

1018 JA | Amsterdam | The Netherlands
www.permavoid.com | info@permavoid.co.uk

Permavoid Ltd. is part of the Polypipe Group.